

SELF-CONTAINED INDOOR AIR-COOLED CHILLERS



AP Series Indoor Air-Cooled Chillers

ICE AP Series Self-Contained, Air-Cooled Chillers provide maximum efficiency per square foot of plant space. The AP Series Chillers incorporate a high-flow process water pump that minimizes process temperature gradients. A top-mounted discharge connects to plant ventilation ducts to supplement facility heating in winter and increase ventilation in summer.

The AP Series Chillers offer capacities from 12 to 31 nominal tons. This series is designed for processes requiring chiller fluid temperatures from +20°F to +60°F.

Budzar also designs and manufactures specialized equipment for non-standard applications. Our engineers have extensive experience in process chilling and heating applications for such industries as: rubber, paper, plastics, chemical, food, and metal working. We take the time to understand your current and future needs and design a solution targeted at high quality and fast payback.



Bulletin #23

engineering
PRECISION

EXCELLENT RETURN ON INVESTMENT

- Each Budzar unit is designed to maximize the productivity of your process. Budzar quality and reliability provide excellent value for each dollar invested.
- AP Series Chillers typically achieve rapid payback because of energy cost savings made possible by reclamation of condenser heat.
- Requires no condenser cooling water.

LOW-COST, SIMPLE OPERATION AND MAINTENANCE

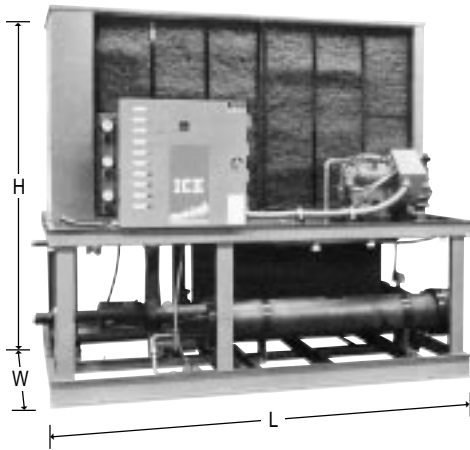
- Semi-hermetic compressors feature cylinder unloading capacity control for precise temperature control and extended equipment service life under varying load conditions.
- A.S.M.E. constructed steel shell and copper tube chiller vessels and evaporators are specifically selected for optimum performance and efficiency.
- Easy-to-monitor functions status indicators provide safe, easy operation.

QUICK AND EASY INSTALLATION

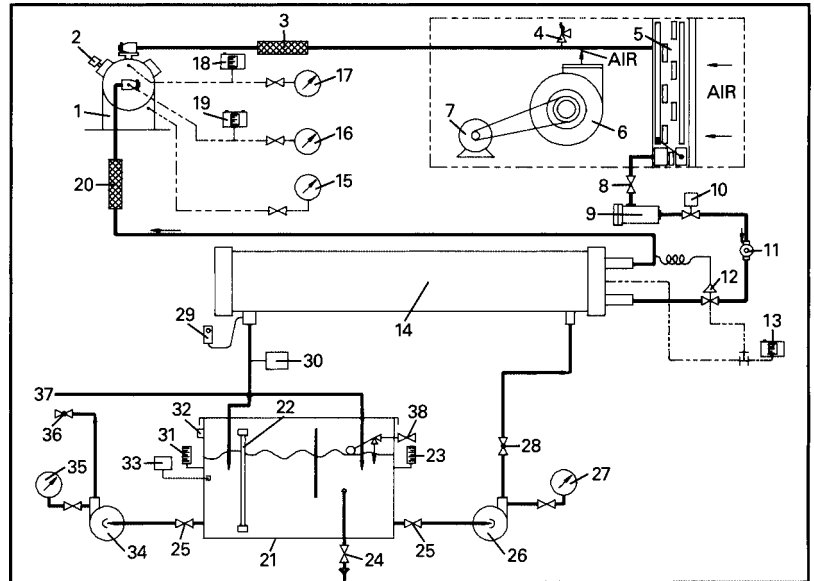
- Installation cost is lowered by combining our central chillers with water reservoir assemblies. Units arrive at your plant pre-piped, and pre-wired.
- All units are factory tested prior to shipment.



process
TEMPERATURE
control



Model AP-19 illustrating easily accessible compressor, pump, chiller barrel, electrical enclosure, and easily replaceable filter. Insulation is a standard feature.



- | | | |
|------------------------------------|----------------------------------|---|
| 1. Compressor | 14. Chiller Barrel | 27. Pressure Gauge |
| 2. Unloader Solenoid | 15. Oil Pressure Gauge | 28. Flow Control/Shut-Off Valve |
| 3. Vibration Isolator | 16. Low Pressure Gauge | 29. Low Temperature Freezerstat |
| 4. Relief Valve | 17. High Pressure Gauge | 30. Flow Switch |
| 5. Condenser Coil | 18. High Pressure Switch | 31. To Process Thermometer |
| 6. Blower | 19. Pumpdown Switch | 32. Reservoir Over Flow |
| 7. Blower Motor | 20. Vibration Isolator | 33. Chiller Sequencing Thermostat |
| 8. Liquid Line Valve | 21. Baffled Reservoir with Cover | 34. Process Pump |
| 9. Filter-Drier | 22. Sight Glass | 35. Pressure Gauge |
| 10. Liquid Solenoid Valve | 23. Process Return Thermometer | 36. Process Supply Connection |
| 11. Sight Glass/Moisture Indicator | 24. Reservoir Drain Valve | 37. Process Return Connection |
| 12. Expansion Valve | 25. Pump Service Valve | 38. Make-Up Float Valve with Shut-Off Valve |
| 13. Low Pressure Freeze Control | 26. Chiller Pump | |

AP SERIES INDOOR AIR-COOLED CHILLERS

MODEL AP		AP-1415	AP-1520	AP-2025	AP-2330	AP-3135	AP-3540
Capacity @ 50° LWT -	TONS	13.7	15.3	20.0	23.1	31.0	34.5
Compressor -	HP	15	20	25	30	35	40
Chiller Flow -	GPM / PSI	46/17	50/20	64/21	75/17	99/18	110/21
Chiller Pump -	HP	1.5	1.5	1.5	1.5	2	3
Process Flow -	GPM / PSI	61/56	67/54	85/52	100/52	132/54	146/54
Process Pump -	HP	5	5	5	7.5	7.5	7.5
Connections (NPT) Supply -	INCHES	2	2	2	2 1/2	3	3
Return -	INCHES	2	2 1/2	2 1/2	2 1/2	3	3
Blower Motor -	HP	5	7.5	7.5	10	15	15
	CFM @ 0.25" H ₂ O	12,000	15,000	16,000	19,400	26,000	26,000
Heat-Output @ Full Load -	BTU/HR	234,400	256,300	329,100	389,200	514,000	569,500
Nameplate Amps @ 460 / 3 / 60 -		46.8	54.2	62.6	74.6	97.9	107.3
Holding Tank Size -	GALLONS	110	110	180	180	220	220
Shipping Weight (Approx.) -	LBS	2,200	2,300	3,600	3,800	4,100	4,300
Operating Weight (Approx.) -	LBS	3,100	3,200	5,100	5,300	6,000	6,000
Dimensions (Approx.) LxWxH -	INCHES	94 1/4 x 66 3/4 x 97		110 1/4 x 70 3/4 x 97		130 x 77 x 97	

NOTE: All data based upon standard rating condition of cooling water from 56° to 50°F (6°Δ T) with 95°F ambient air entering condenser.

Budzar Industries reserves the right to discontinue or change specifications without notice, consistent with sound engineering practice and current industrial standards.



38241 Willoughby Pkwy., Willoughby, Ohio 44094-7582
 (440) 918-0505 • Fax (440) 918-0606/918-0707
 Internet: www.budzar.com
 E-mail: sales@budzar.com